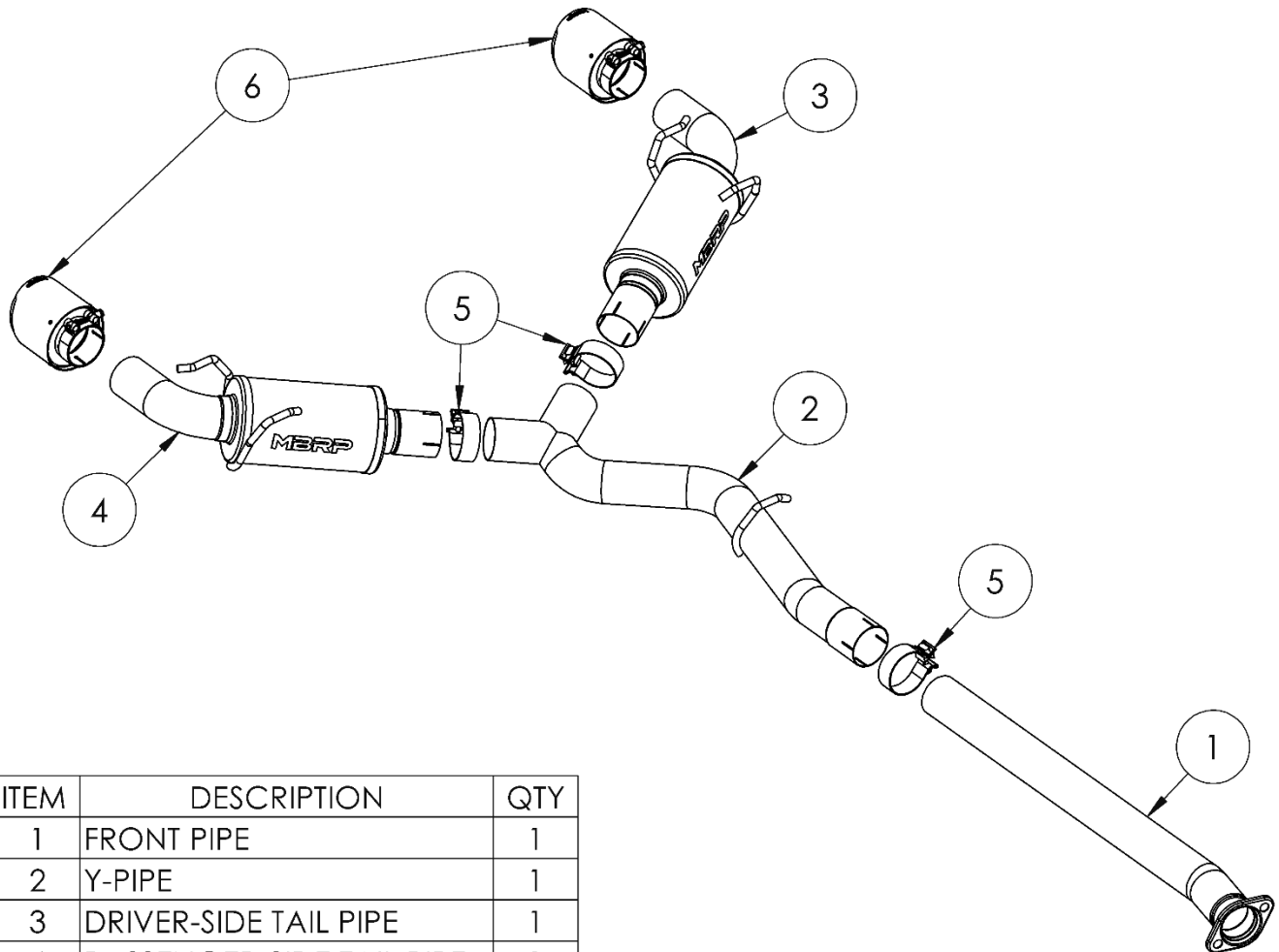


S4804

2013-UP SUBARU BRZ, 2.0L/2.4L
2017-UP TOYOTA GR86, 2.0L/2.4L
2013-2016 SCION FR-S, 2.0L
CAT-BACK, 3.0" DUAL SPLIT REAR

MBRP®



ITEM	DESCRIPTION	QTY
1	FRONT PIPE	1
2	Y-PIPE	1
3	DRIVER-SIDE TAIL PIPE	1
4	PASSENGER-SIDE TAIL PIPE	1
5	3.0" CLAMP	3
6	TIP	2

PLEASE READ BEFORE STARTING INSTALLATION

While MBRP has made every effort to ensure that all components of this system are of superior quality and properly packaged, it is the installer's responsibility to ensure the following before removal of the factory exhaust:

- that ALL components shown above are present.
- that ALL mating components fit together.
- that there are no damaged components.
- that the system you have purchased is appropriate for your vehicle year, model and configuration.
- that the system will not interfere with any modifications previously installed or planned.
- that you have read and understand these instructions.

If you have any questions or are uncertain about any aspect of the installation of this system to your vehicle please contact your dealer before commencing installation.

MBRP

Removal of Stock System



Figure 1

1. Apply penetrating lubricant liberally to all exhaust fasteners, hangers, and rubber insulators.

2. Disconnect the exhaust at the rear of the vehicle and remove from the 4 rubber insulators.

Refer to Figure 1. (2022 model shown)

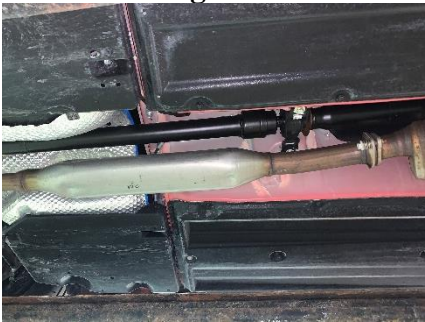


Figure 2

3. Unbolt the 2 bolts located at the factory cat-back connection. Retain factory hardware for reinstallation. Remove the factory exhaust.

Refer to Figure 2.

Installation of MBRP Performance Exhaust

1. Using the previously removed hardware, loosely attach the **Front Pipe** to the factory cat back connection.

Refer to Figure 3.



Figure 3

2. Install the **Y-Pipe** onto the **Front Pipe** using a **3.0" Clamp**, rotating the hanger into the rubber insulator. Do not tighten any clamps until the last step.

Refer to Figure 4.

3. Install the factory rubber insulators onto the **Passenger-Side Tail Pipe**, then slide it onto the **Y-Pipe** with a **3.0" Clamp** and mount the rubber insulators to the vehicle.

Refer to Figures 5 & 6.



Figure 4

4. Repeat **Step 3** for the **Driver-Side Tail Pipe**.



Figure 5

MBRP



Figure 6



Figure 7



Figure 8

5. Install the **Tips**, and adjust to your liking, centered in the fascia openings. Refer to **Figures 7 & 8**.

6. Carefully align the system and tips. Align the edge of each band clamp with the edge of the joint it is connecting. Tighten all hardware and clamps, starting at the front and working rearward to secure the system. Check along the full length of the exhaust system to ensure there is adequate clearance for fuel lines, vent lines, brake lines, frame, bodywork, suspension and any wiring, etc. If there is any interference detected, relocate or adjust to provide adequate clearance. Ensure all clamp connections are secure and components are unable to rotate or slide. Band clamps require approximately 45 lb-ft (60 N-m) of torque. Verify clearances, system security and band clamp torque after 30-60 miles (50-100 km) of driving.



Congratulations! You are ready to begin experiencing the improved power, sound and driving experience of your **MBRP** Performance Exhaust. We know you will enjoy your purchase!